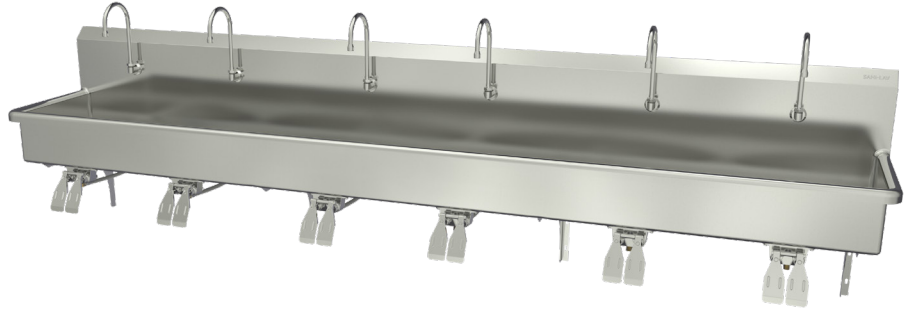


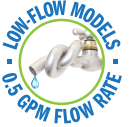
6-Person Hands-Free Wall Mount Stainless Steel Wash Station

Model	Flow-Rate
512WSL	Standard 2.0 GPM
512WSL-0.5	Low-Flow 0.5 GPM



Product Specifications

Constructed from welded #16 gauge type 304 stainless steel. The front, bottom and back are formed from a single sheet with a rolled rim on front and sides. Exposed surfaces have a blended uniform satin finish. Specially designed knee valves provide easy access to working parts without disconnecting mount or plumbing.



Outside Dimensions	120" x 20" x 18" High
Inside Bowl Size	117" x 16-1/2" x 8" Deep
Back Splash Height	10"
Water Activation	Double Knee Pedal Valve
Flow Rate	2 GPM
Inlet Connections	1/2" Male NPT
Drain Opening	2"
Finish	Satin
Strainer	1-1/2" Dia. Duo Basket Strainer
Wall Mounting Bracket	1/4" Dia. Mounting Holes

Includes

- (1) Wall mount wash station
- (6) Double knee pedal valve with 4 nuts
- (6) Swivel gooseneck spout with aerator
- (6) Connecting tube for valve to spout connection
- (12) Fittings, brass, 0.375" male compression and 0.375" male NPT
- (4) Wall-mounting brackets
- (4) Support brackets
- (3) Strainer assembly with basket

Product Compliance

NSF/ANSI 2 Food Equipment
NSF/ANSI 372 Low-Lead



Part: _____ Quantity: _____

Project: _____

Contact: _____

Date: _____

Approval: _____

Notes:



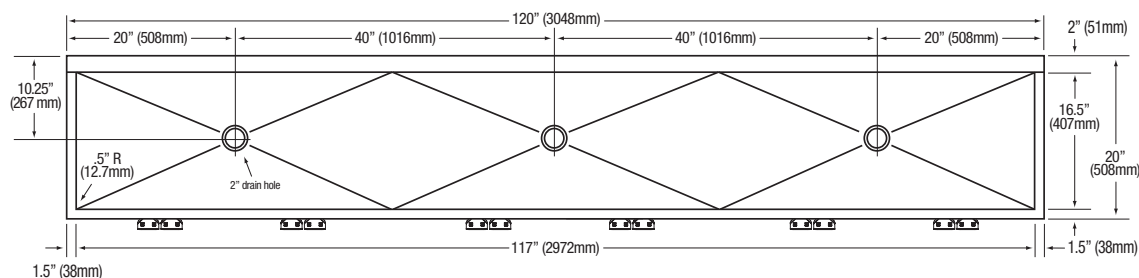
WARNING: Equipment that include faucets on this page may contain a chemical known to the State of California to cause cancer, birth defects or other reproductive harm.

COLUMBIA PRODUCTS
800.626.2117 • columbiasinks.com • info@columbiasinks.com

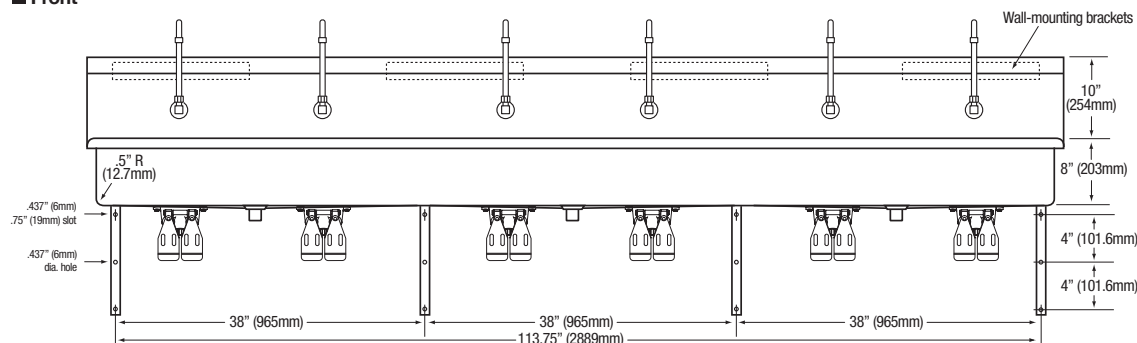
©2021 Columbia Products

6-Person Hands-Free Wall Mount Stainless Steel Wash Station Models 512WSL and 512WSL-0.5

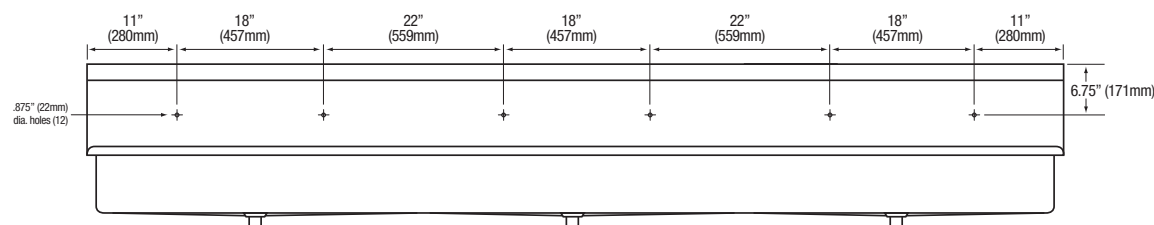
■ [Top](#)



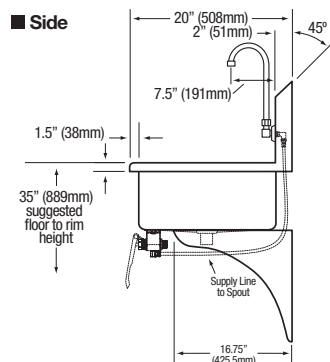
■ Front



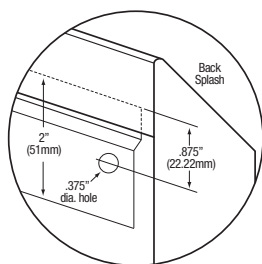
■ Hole Configurations



■ Side



■ Wall Mounting Detail



■ Supply Line Detail

